

# OL<sup>®</sup> Care Designed for your peace of mind

## PlanetPress Classic Re-entry Information Pack

### Key PlanetPress Classic milestones

- PlanetPress Suite has entered end-of-life status and will be discontinued on **December 31, 2028**.
- Customers without active OL Care are encouraged to re-enter by the **December 31, 2023** deadline.
- As of **January 1, 2024**, we will no longer sell PlanetPress 7. However, we will continue to support existing licenses with active OL Care through **December 31, 2028**.
- Yearly renewals will be available until the product discontinuation on **December 31, 2028**.

### OL Care

- **Why OL Care?**  
Our world-class program gives you access to unlimited product support, online learning resources and regular software updates & upgrades.
- **How can I re-enter OL Care?**  
Fill in the form **before December 31, 2023** to get in touch. Your Upland Customer Success Manager will contact you to discuss your subscription and personalized offer.



### Upgrades

- **Why should I upgrade to OL Connect?**  
OL Connect was developed to provide modern document composition and automation capabilities leveraging the latest technology standards. An overview of OL Connect, its key features, and the different editions available to you can be reviewed in the additional documents included in this pack. Our team of experts is available to discuss the best upgrade option for your business needs.
- **How can I upgrade from PlanetPress Classic to OL Connect?**  
An active OL Care contract is required to purchase an upgrade to OL Connect – customers with no active OL Care must purchase a re-entry at the same time or before the upgrade.  
**After December 31, 2023**, re-entries will no longer be allowed, customers will then need to purchase a new OL Connect license to upgrade.
- **What happens if I purchase an upgrade and a re-entry?**  
You will get one year of OL Care on both your new Connect and Planet Press Suite licenses giving you enough time to migrate. Renewing both or only the Connect Care contract will be at your discretion.

# Transition from PlanetPress Suite to OL<sup>®</sup> Connect made easy

## Enable multi-channel communications and process automation for your business

Many businesses using PlanetPress Suite are looking at ways to produce correspondence to ensure that customers receive information in the format that suits their needs. While PlanetPress Suite offers great functionalities, moving to the OL Connect Technology could help further extend their systems capabilities and add web and digital delivery to all customer communications.

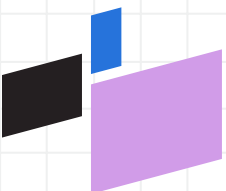
In addition to helping create and send personalized communications, OL Connect allows to capture output from existing systems and then retrieve the information needed to automate processes. It provides the tools and freedom to use data as needed and enable businesses to benefit from enhanced document creation, automation and multichannel distribution leveraging the latest industry standards and web technologies.



## Your roadmap to OL<sup>®</sup> Connect at your own pace

Considering a move to digital technology does not need to be daunting. OL Connect is introduced in your day-to-day operations without affecting your existing IT infrastructure and templates.

- Install OL Connect on a new server and run both PlanetPress Suite and OL Connect Servers simultaneously.
- Keep on using your existing templates in PlanetPress Suite and migrate them to OL Connect on your own time.
- Create any new templates and processes in OL Connect.



# OL<sup>®</sup> Connect Highlights

Take advantage of a full range of settings and options.

## Use data from any source with the DataMapper

- Excel, CSV, Database, XML, JSON, PDF, PCL\* & AFP\*

## Expand to digital outputs

- HTML Email
- Build variable web pages

## Enhance documents design and assembly

- Automatic handling of page overflow
- Standard (Static) and Dynamic Tables
- Output presets
  - » Wizard Based Print Output
    - Booklet Imposition
    - Inserter Barcodes\OMR
    - Job and Document Separation
    - Job Sortation and Batching
- Commingling
  - » Match and merge different types of documents from various systems through an identifier

## Benefit from regular software improvements

- Two major technology updates a year
- Regular patches update

## OL<sup>®</sup> Care coverage for your peace of mind

Benefit from product support for both PlanetPress Suite and OL Connect licenses until the expiration of your Connect Care contract.\*\*

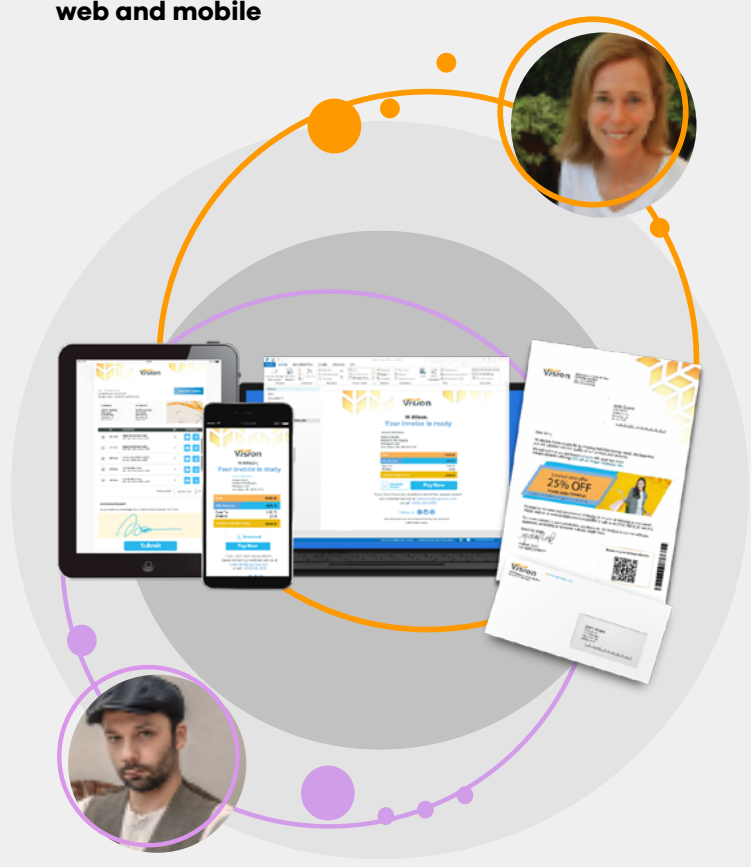
\*Features sold separately.

\*\*A renewal quote for your OL Connect and PlanetPress Suite licenses will be sent to you. The renewal for both or only the OL Connect license will be at your discretion.



### Compose

Re-engineer your existing documents or create new personalized content **for print, email, web and mobile**



### Distribute

Automate output using rules and conditions to control it's final format and destination

### Interact

Use your digital output to create new digital inputs and trigger follow-up processes





## More features

### DataMapper

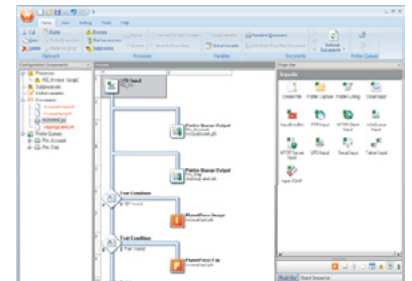
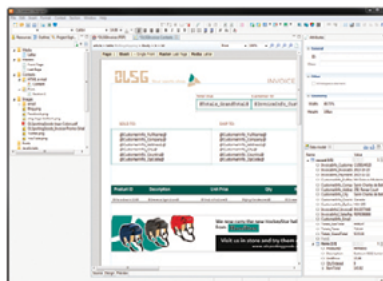
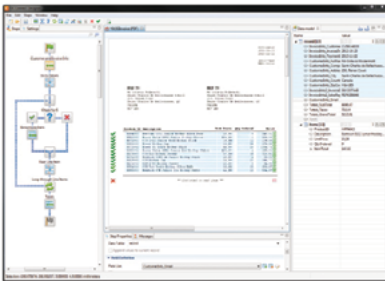
- Extract data from almost any source, including most print streams
- Powerful data mapping tools with GUI and advanced scripting modes
- Normalizes all inputs to a unified format to make designing layouts easier

### Multi-channel Designer

- Multichannel contexts in a single designer
- Supports textwrapping, page overflow, tables, white space management, barcodes, and much more
- Design modes include easy to use drag & drop, as well as HTML5, CSS, JavaScript

### Same Powerful Workflow tool

- Trigger processes
- Capture input (folders, web, email etc.)
- Create rules and conditions
- Create and distribute output
- Connect to other systems



## Ready get things done?

Let us show you what OL Connect can do.

[Request a Demo](#)

**Upland Objectif Lune** helps companies automate their business communications with our digital transformation solutions. We create, manage, distribute and automate transactional and promotional documents while solving the challenge of integrating systems.





# OL<sup>®</sup> Connect Edition Comparison Table

## Performance

Achieved performance depends on numerous factors, including CPUs, RAM, storage speed, software configuration, solution complexity, etc.

1 – From hundreds to thousands

2 – From thousands to hundreds of thousands

## Target Printers

## Email volume

## PDF volume

## Max parallel jobs

Number of jobs that can be run simultaneously. A job is a group of one or more documents being generated as a single batch

## Max machines

Number of machines that can work together on single or multiple jobs. A machine is a PC or VM that runs the OL Connect Server application

## Input data types

### Excel/CSV, Database, JSON, XML

### Text, PDF, PostScript

Most PDF formats are supported. Metadata from PDF/VT can also be extracted

### PCL (includes 3rd party license)

### AFP (includes 3rd party license)

IPDS data is not supported. Metadata from AFP can also be extracted

	OL <sup>®</sup> Connect Professional	OL <sup>®</sup> Connect Enterprise	OL <sup>®</sup> Connect Development
<b>Target Printers</b>	Desktop MFP	Production Roll-fed	
<b>Email volume</b>	Medium <sup>1</sup>	High <sup>2</sup>	
<b>PDF volume</b>	Medium <sup>1</sup>	High <sup>2</sup>	
<b>Max parallel jobs</b>	8	64	8
<b>Max machines</b>	1	4	1
<b>Excel/CSV, Database, JSON, XML</b>	●	●	●
<b>Text, PDF, PostScript</b>	●	●	●
<b>PCL (includes 3rd party license)</b>	○	○	○
<b>AFP (includes 3rd party license)</b>		○	○

All rows apply to both term and perpetual licenses

## Legend

- Blank** Not available
- Features that are now included with OL<sup>®</sup> Connect license as part of the 2023 price list
- Feature has restricted functionality (watermarks, limited recipients, single IP address)
- Features that can be purchased as separate options

	OL® Connect Professional	OL® Connect Enterprise	OL® Connect Development
<b>DataMapper</b>			
<b>Generate uniform data format (UDF)</b> Same UDF can be generated from various input data types	●	●	●
<b>Data wizards</b> Follow guided instructions to extract data	●	●	●
<b>WYSIWYG configuration tool</b> Drag & drop tasks to generate a processing flow	●	●	●
<b>Unlimited configuration files</b> Create as many data mapping configurations as needed	●	●	●
<b>Designer</b>			
<b>WYSIWYG design</b> Includes the standard Desktop publishing elements	●	●	●
<b>Unlimited templates</b> Create many templates	●	●	●
<b>Data-independent/UDF-driven</b> No knowledge of the original data type is required	●	●	●
<b>For print output</b> Includes PDF and most printer languages	●	●	●
<b>For email output</b>	●	●	●
<b>For web output</b> Preview and adjust display size when designing responsive documents	●	●	●
<b>OL Connect Send</b>			
<b>Includes 3 users</b>			●

Legend	
Blank	Not available
●	Features that are now included with OL® Connect license as part of the 2023 price list
●	Feature has restricted functionality (watermarks, limited recipients, single IP address)
○	Features that can be purchased as separate options

## Workflow

### Lights out operation

Runs as a series of services and helpers

### Capture data from anywhere

Among others: hot folders, Windows & LPD print queues, email, HTTP, DB queries, OneDrive, FTP/S

### Conditional routing

Create branches based on data values or dynamic conditions

### Parallel processing

Multiple processes run simultaneously on single and multiple jobs

### Multiple business processes

Implement business rules for each type of process that requires automation

### Automate OL® Connect operations

Automate the extraction of data and the generation of documents using flexible and complete scheduling

### Multiple output destinations

Output simultaneously to printers, folders, FTP, email, OneDrive or a number of Document Management Systems

### Third-party connectors

Docuware, Therefore, SharePoint, M-Files

### PlanetPress Suite compatible

Generate PlanetPress Classic documents

### Classic PSM connector

Send jobs to PrintShop Mail Classic

### Classic PReS connector

Send jobs to PReS Classic

### Imaging module

Includes Image, Fax and Search functionality

	OL® Connect Professional	OL® Connect Enterprise	OL® Connect Development
Lights out operation	●	●	●
Capture data from anywhere	●	●	●
Conditional routing	●	●	●
Parallel processing	●	●	●
Multiple business processes	●	●	●
Automate OL® Connect operations	●	●	●
Multiple output destinations	●	●	●
Third-party connectors	●	●	●
PlanetPress Suite compatible	●	●	●
Classic PSM connector	●	●	●
Classic PReS connector	●	●	●
Imaging module	●	●	●

Legend	
Blank	Not available
●	Features that are now included with OL® Connect license as part of the 2023 price list
●	Feature has restricted functionality (watermarks, limited recipients, single IP address)
○	Features that can be purchased as separate options

	OL® Connect Professional	OL® Connect Enterprise	OL® Connect Development
<b>Output formats</b>			
<b>PDF, PDF/A, PDF/VT</b> Includes PDF/X, Factur-X, ZUGFeRD	●	●	●
<b>PostScript</b> PS level 2 or 3, with full PPD control	●	●	●
<b>PCL</b>	●	●	●
<b>AFP/IPDS</b>		●	●
<b>Output management</b>			
<b>Windows printing</b> Send to local or shared Windows printers	●	●	●
<b>Document splitting</b> Split the output job in batches or as individual documents	●	●	●
<b>Impositioning</b> Order and arrange multiple pages on sheets	●	●	●
<b>Finishing</b> Control every printer feature	●	●	●
<b>Optimized output (VIPP, VPS, PPML)</b> Specialized print formats for optimizing certain devices	●	●	●
<b>Reusable job presets</b> Save filtering, grouping, and sorting options to reusable presets	●	●	●
<b>Reusable output presets</b> Save output options to reusable presets	●	●	●
<b>File creation</b> Generate files on disk	●	●	●
<b>LPR printing</b> Send directly to LPD queues	●	●	●
<b>Print Manager</b> Manage and prioritize print jobs manually		●	

<b>Legend</b>	<b>Blank</b>	Not available
	●	Features that are now included with OL® Connect license as part of the 2023 price list
	●	Feature has restricted functionality (watermarks, limited recipients, single IP address)
	○	Features that can be purchased as separate options